



Leadership Development

2019 Summer Programs



40 YEARS OF EXCELLENCE IN LEADERSHIP DEVELOPMENT

ADVENTURE • CHALLENGE • SPIRITUAL GROWTH



**Christian Camps
and Conferences**

Leadership Programs

Brookwoods, Deer Run and Moose River Outpost offer a variety of opportunities for summer leadership development. It is our belief that through challenging experiences in the wilderness, individuals are able to mature and expand their development as a total person. Individuals are helped to realize personal responsibility as members of the group and as the Body of Christ.

Please read the program descriptions to select the program that best meets your needs and goals. Also included is a brief decision matrix that will assist you in the process.

BASIC

The Brothers And Sisters In Christ (BASIC) program is a four-week experience for 15 year old boys and girls. During their month at camp, teenagers will participate in co-ed team building activities in an outdoor setting. In addition to their usual camp activities, participants will spend three full days together on ropes course elements, guided by a trained facilitator. They will enjoy an overnight canoeing trip and also face the challenges of a three-day hike in the White Mountain Range. This program is limited to the oldest 12 boys and 12 girls who sign up for a month, upon approval of the Directors. Campers generally must be in 9th grade and 15 years of age or above for this 4-week program. There is no extra cost for this program, which is run at Brookwoods and Deer Run, and no additional application to the program beyond the normal camp application.

WILD

The Wilderness Intensive Leadership Development (WILD) program is a four-week, two-summer commitment for 16-17 year old future leaders. It is an immersion wilderness experience where, in the midst of the breathtaking beauty of creation, participants build new outdoor skills, learn about their faith in God, and how to serve and lead others.

Accommodations are a lakeside campground featuring canvas wall tents, modern bathroom/shower facilities, and sunsets surpassed in their beauty only by the stars that follow them. During this two-summer commitment, participants will navigate along the Appalachian Trail, kayak Maine and New Hampshire's white water, and serve as counselors in training at the main camp. Those that apply for WILD should be prepared to live simply, to accomplish more than they thought possible, and to develop a lifelong love for the outdoors. This program is based in Maine at Moose River Outpost, and consists of no more than 12 participants each year.



SALT

The Servant And Leadership Training (SALT) program is a four-week, two-summer experience for 16-17 year old boys and girls, based in New Hampshire at Brookwoods and Deer Run. During their time at camp, participants will explore how to embody the biblical call to serve through self-assessment, team building, and hands on service opportunities in several locations. The capstone experience during the first summer is a week long missions trip to Nogales, Mexico where students will serve, eat, and worship alongside fellow believers from the United States and Mexico. The second summer will build on the first year experiences, finishing with a domestic service experience in Los Angeles, California, at the Dream Center. The size of the program is limited to 5 boys and 5 girls each year.

Leadership Development Program

The Leadership Development Program (LDP) is an eight-week, two-summer program for 16-17 year old boys and girls. It pays careful attention to personal growth, skill development, and fostering leadership qualities in the participants. Program activities include backpacking in the White Mountains of New Hampshire, canoeing in the Allagash and Chibougamau wilderness regions, lifeguard certification, high ropes, Bible Studies, leadership training, wilderness solo experiences and activity debriefing. In addition, participants spend two-weeks as apprentice counselors in Brookwoods and Deer Run cabins. This program is based in New Hampshire at Brookwoods and Deer Run, and is limited to 24 participants each year.

Qualifications of an Applicant to WILD, SALT or LDP

Applicants who are accepted into the programs are positive, supportive, team-oriented young men and women. The program is open to all campers with acceptable recommendations and physical stamina.

1. **Spiritual Commitment.** We are looking for young men and women who are actively pursuing a relationship with Jesus and who practically live out their faith. This faith should not be a result of a “camp high” while they are at camp, but a vital part of their lives at home. One demonstration of their faith is involvement in Bible studies, or leadership in the area of faith within their churches or youth groups.

2. **Community Involvement.** Candidates should be involved in their school, church and residential communities, using their individual passions and gifts to make a difference in the lives of others. Some refer to this as volunteerism. While we recognize candidates may have different opportunities in this area, we are looking for those who are exhibiting growth in their spiritual and cultural interests.

3. **Integrity.** The candidate’s behavior while at camp is a window into their personality and soul. In many cases we have seen behavior at camp that is different from behavior in front of their parents or in their church environment. The candidate should be a person of integrity; behavior that is consistent with who they say they are in all environments.

4. **16 years old.** Ideally, candidates should be going into the 11th grade and should be 16 by the start of camp in June. Exceptions will be made for outstanding candidates who have the maturity to be successful in the leadership programs.

5. **Physically Fit.** Candidates should have the physical ability to participate in all program activities, without restriction. They should be in above average physical condition - able to participate in strenuous hiking, paddling, and swimming activities. Applicants must secure the proper medical approval for participation.

6. **Committed.** Candidates need to commit to the entire program duration; 8 weeks for WILD, 8 weeks for SALT and 16 weeks for LDP.

Side Note: The length of a candidate’s connection to camp may be considered if other factors do not lead to clarity in the selection process. While legacy considerations may play a role in the selection process, it does not ensure a selection in the program. The primary concern must remain whether or not the candidate can contribute to and be successful in the entirety of the program.

Checklist for Application

The application and forms can be completed on the camp website. The following items must be received to complete the application process:

1. Parental Acknowledgement - This document is to ensure that the parents understand what is involved with the program, including the selection and notification process.
2. Program Application - Applicants will register by submitting a completed application with all required signatures. Given the high demand for participation, it is required that completed applications be received by December 15th. After this date, applicants should call to inquire about available positions. Applications are acknowledged upon receipt of the complete package. To be accepted, the applicant must complete the application in its entirety, including medical information and authorization signatures. After acceptance, additional materials will be sent regarding specific details of the program such as clothing lists, travel plans to camp, and payment information in March. At acceptance time, a \$500 deposit for the program will be required to secure the space.
3. Notice of Risk - To assure ourselves and your family that we have informed you of the risks involved in camp activities, we ask parents and participants to sign and return the attached Notice of Risk form.
4. Two Recommendations - Written recommendations are required from the applicant's pastor, or someone who can speak about the applicant's spiritual maturity and growth, **and** from one of their school teachers. References shall be submitted using camp supplied formats, and also on the website.

Dates and Rates for 2019

WILD, SALT and LDP necessitate a two summer commitment in terms of participation and financial obligation. The leadership programs, in maintaining traditionally high standards on a space-available basis, reserve the right to refuse admission to any applicant. All leadership program fees are due by May 15th.

WILD is in Maine and runs from July 7th to August 3rd. This program costs \$2,575 each summer.

SALT is in New Hampshire and runs from July 7th to August 3rd. This program costs \$3,695 each summer, which includes all travel expenses to Mexico and Los Angeles, California.

LDP is in New Hampshire and runs from June 23rd to August 17th. The program costs \$4,545 each summer.



Commitments

WILD, SALT and LDP participants are expected to be involved with the program for the entire program over a two summer period. Those who have other outside commitments such as family vacations, sports camps or extended school sessions should not apply. It is expected that participants take part in all activities, including the activities of work, play, worship and living together in close quarters.

The staff desires to create a relationship with campers that encourages them to talk over ways of facing the pressures of today's society. However we do not have time nor sufficient staff resources to deal with dependency on alcohol, tobacco, or other drugs. Application signifies acceptance of this choice - violations will mean authorization for immediate dismissal.

The staff at camp feel a keen sense of responsibility for the spiritual growth of our campers; and we will endeavor to provide a strong Christian environment for this to take place.



Authorization

This application must have all authorization signatures for an applicant to be admitted. The leadership programs of Christian Camps and Conferences, Inc. makes this opportunity available to high school students, throughout the United States. The program does not discriminate on the basis of race, color, sex, national or ethnic origin.

During the applicant's summer experience, the participant will be closely supervised in every activity. Careful plans for living accommodations, meals, instructors, counselors, and daily medical supervision have been made. It is understood that Christian Camps and Conferences Inc. will not be responsible for any "act of God" or unforeseen incident that might occur throughout the summer experience. Furthermore, Christian Camps and Conferences, Inc. will not be held responsible for any act, error, omission, or intentional disregard of rules and regulations on the part of any program participants. Additional expenses, if incurred under any of these circumstances, must be borne by the participants.

It is understood that Christian Camps and Conferences, Inc. or any members of its Board of Directors will not be held responsible for any discipline problems encountered with a participant. Any participants possessing or using drugs or alcohol, chewing tobacco, cigarettes, violating curfew, leaving the activities of the program, entering rooms of the opposite sex, or behaving in any manner inconsistent with Christian Camps and Conferences' standards, or local, state or federal statutes will be considered immediate grounds for dismissal. The reason for the dismissal will be made known to the proper persons, and the parents will be notified of the return arrangements. If a student is dismissed from the program for disciplinary reasons, he/she or his/her family will assume financial responsibility for returning. No tuition refund will be made.

The participant and his/her parent or guardian acknowledge receipt and reading of the rules and regulations and standards of conduct of Christian Camps and Conferences, Inc. and agree to the rigid adherence of said standards.

WILD Program Specifics

The Wilderness Intensive Leadership Development program is set in the Kennebec & Moose River Valley Region of Maine, with its base camp at the WILD Site at Moose River Outpost. Life in WILD – at its base camp and on trips – is simplified: without the distractions of buzzing phones, ear buds, social media, feeds, and multiple friend groups, participants are given the opportunity to “be here now” – to be present with their group and with their counselors, and hopefully to be present with the Lord. These factors are refreshing, especially in the midst of the beautiful Maine wilderness, but they can also be challenging as they somewhat force participants to face the reality before them – whether that reality is physical at the time, or spiritual or group dynamics related. The trained WILD counselors are there the whole time to help guide and foster a safe place where this growth can happen in a healthy and beneficial way.



One of the main goals that WILD has for quiet time and group discussion is that participants will grow in their understanding of what a godly leader looks like, and then hopefully take steps forward in being that leader. WILD defines a godly leader as someone who listens to God and obeys him. WILD challenges each participant to grow in leadership, which looks different for each person. In the first summer WILD participants will look a lot to their counselors for teaching and coaching in outdoor skills and how to conduct themselves in the group. When the second summer begins, WILD counselors will refresh the participants on these things, but will step back to let the WILD 2's step up and lead themselves as a group.

While there is no such thing as a “normal day for WILD,” some daily elements do carry through the entire eight weeks. Each day WILD participants will exercise together as a group, have guided quiet time, cook at least 2 meals for themselves over a fire (on average) and eat in the MRO Dining Hall at other times, debrief activities and days and group formation processes, as well as have a time to talk as a group about the quiet time topic and readings.

At the end of each summer, on the last full day of camp, both the WILD 1's and the WILD 2's get to challenge themselves in a mini triathlon, where they swim across the pond, mountain bike down a mountain road and a trail by a beautiful stream, and run up the camp driveway to finish at main camp where celebration unfolds for the rest of the day in different ways. Over two summers, WILD works to develop godly young leaders by teaching them skills and providing them every opportunity to apply them. Whether it's paddling a river, performing a wilderness rescue, or leading a Bible study, WILD graduates are equipped to listen to God, say "yes!" to HIM, and enjoy the blessings of living the adventure He has called them to - whether in the backcountry or right at home.

WILD 1:

- ☐ Acquire outdoor skills such as navigation, Leave No Trace, backpacking, paddle strokes, reading white water or building a fire
- ☐ Rock Climbing trips and belaying skills
- ☐ 2 Overnight training trips: Hiking, White water training
- ☐ 12-day backcountry trip: Flat/White water paddling and Appalachian Trail hiking
- ☐ 24-hour solo
- ☐ Service opportunities

WILD 2

- ☐ Wilderness First Aid Certification
- ☐ 5-day student led trip: Hike Bigelow region
- ☐ 36-hour solo
- ☐ One week of apprenticeship at MRO as camp counselor
- ☐ Service opportunities
- ☐ 7-day whitewater kayaking on the Androscoggin River

SALT Program Specifics

The Servant And Leadership Training program is designed to provide new participants, as well as a continuing opportunity for past Brookwoods, Deer Run and Moose River Outpost campers, to be involved with the camp community and expand their faith through exploration of themselves, each other, and the meaning of service to another community. The program combines team building and training experiences, with Bible Study in preparation for an extensive opportunity to serve others on a international and a domestic mission experience.

The SALT experience is done over two summers, four week sessions. The highlight of each summer is a international and a domestic week long "mission trip" . These experiences will expose the participants to needs and opportunities of service "not in our back yard".

SALT activities over the two summer, 8 week program:

- ☐ Extended multi-day outdoor experiences in the woods or on the water.
- ☐ On site team building coupled with Bible Studies, personal exploration and inventory.
- ☐ Integration with Brookwoods and Deer Run Banquet
- ☐ One Week Service International opportunity in Nogalas, Mexico
- ☐ Multi-Day Outdoor experience in the Southwest United States at the Grand Canyon.
- ☐ One Week Service domestic opportunity in Los Angeles , California.
- ☐ Camp "Fun Days" and reflection at completion of the service opportunity.



Leadership Development Program Specifics

The Leadership Development program intentionally challenges participants in every aspect of their lives - spiritual, physical, and relational. Upon entering the program, LDPs should expect to encounter sixteen of the most challenging, formative, and fun weeks of their entire lives.



The central component of the Leadership Development Program is its Christ-centered, biblically-based leadership curriculum and spiritual training. The Leadership Development Program operates under the philosophy that all Christians are created for a purpose: to glorify God by loving God and loving others. An effective leader lives by this philosophy. Therefore, the purpose of the Leadership Development Program is for participants to grow in leadership, both of themselves and others, while using God's Truth as their foundation. Because of this, we view every piece of the program as a means through which LDPs are challenged to know better who God is and how He has gifted them to serve.

Bible-based discussions are an important vehicle for spiritual growth in the program. Bible studies, single-sex devotions, and personal quiet time are woven into the daily schedule to provide the structure in which all other activities take place. The Bible studies are designed not only to provide LDPs with information and instruction, but also to instill a desire to learn more and provide the tools to do so. Bible study topics will range from in-depth study of one particular book of the Bible to broader overview of the cohesiveness of the Bible as a whole. Throughout, these studies will facilitate discussion on how the study of God's word is integral to our daily lives as Christians. Individual participation in these Bible studies is enhanced through regular small group discussions.

Additionally, nightly cabin devotions serve as an opportunity to discuss topics in a smaller, more intimate group setting. Topics covered over the course of two summers may include self-image, drinking and drugs, ethical and social issues, relationships with family and friends, dating and purity, and cultural influences. The goal throughout all discussions and instruction is to build a Biblical perspective based on honest inquiry and informed through prayer and reflection.

Individuals are best able to learn about themselves, their faith, and their relationships when they encounter challenging situations that require them to step outside of what is comfortable. Because of this, a significant aspect of the Leadership Development Program is its challenging physical requirements. We work hard to create a safe yet stretching environment for participants to be pushed beyond their physical comfort levels. On the elements of the low and high ropes courses, in the lake completing a 3 miles open water swim, canoeing, or hiking with heavy packs, the LDPs will build confidence in their own newly discovered abilities and skills, and learn to help and rely on others. These challenges are not easy, and it is imperative that LDPs enter the program physically prepared for the strenuous, yet rewarding activities.

It is the deep, stimulating relationships formed between LDPs as they motivate and support one another through spiritual discussion and physical challenge that bring about the most lasting life-change. Perhaps the biggest challenge of the two summers in the program is simply living in such a close, constant community. LDPs can expect to learn through the opportunities for conflict resolution and clear communication which arise in such close community. As Ephesians 4 illustrates, the purpose of these relationships is to further individuals in their relationship with God and to strengthen them in their service of others. Challenging, Christ-centered relationships facilitate LDPs to become leaders.

The elements of the first summer of the program focus on aiding LDPs as they grow in their understanding of who they are as children of God and what that means for how they interact with others in their community. The second summer expands these skills with additional learning skills, and spiritual development.

LDP 1:

- ☐ Low and High ropes course activities
- ☐ Overnight camping and Androscoggin River canoe trip
- ☐ Eight-day canoeing trip down the Allagash Wilderness Waterway in Maine
- ☐ American Red Cross Lifeguard Training Course instruction
- ☐ American Red Cross CPR and basic First Aid certifications
- ☐ Six day backpacking trip in the White Mountains, including a 24-hour solo
- ☐ In-camp service opportunities
- ☐ Short apprenticeship as a camp counselor
- ☐ Creating a banquet for Brookwoods or Deer Run

LDP 2:

- ☐ Planning and “leading” a five day hike in the White Mountains (under close supervision from trained staff members)
- ☐ Volunteer experience for developmentally disabled campers
- ☐ Physical training for a goal (a 3 mile swim)
- ☐ In-camp and community service opportunities
- ☐ One week apprenticeship as a camp counselor
- ☐ Ten day canoeing and fishing trip in the Chibougamau, Quebec region, including a 48-hour solo

How do I decide which program to apply?

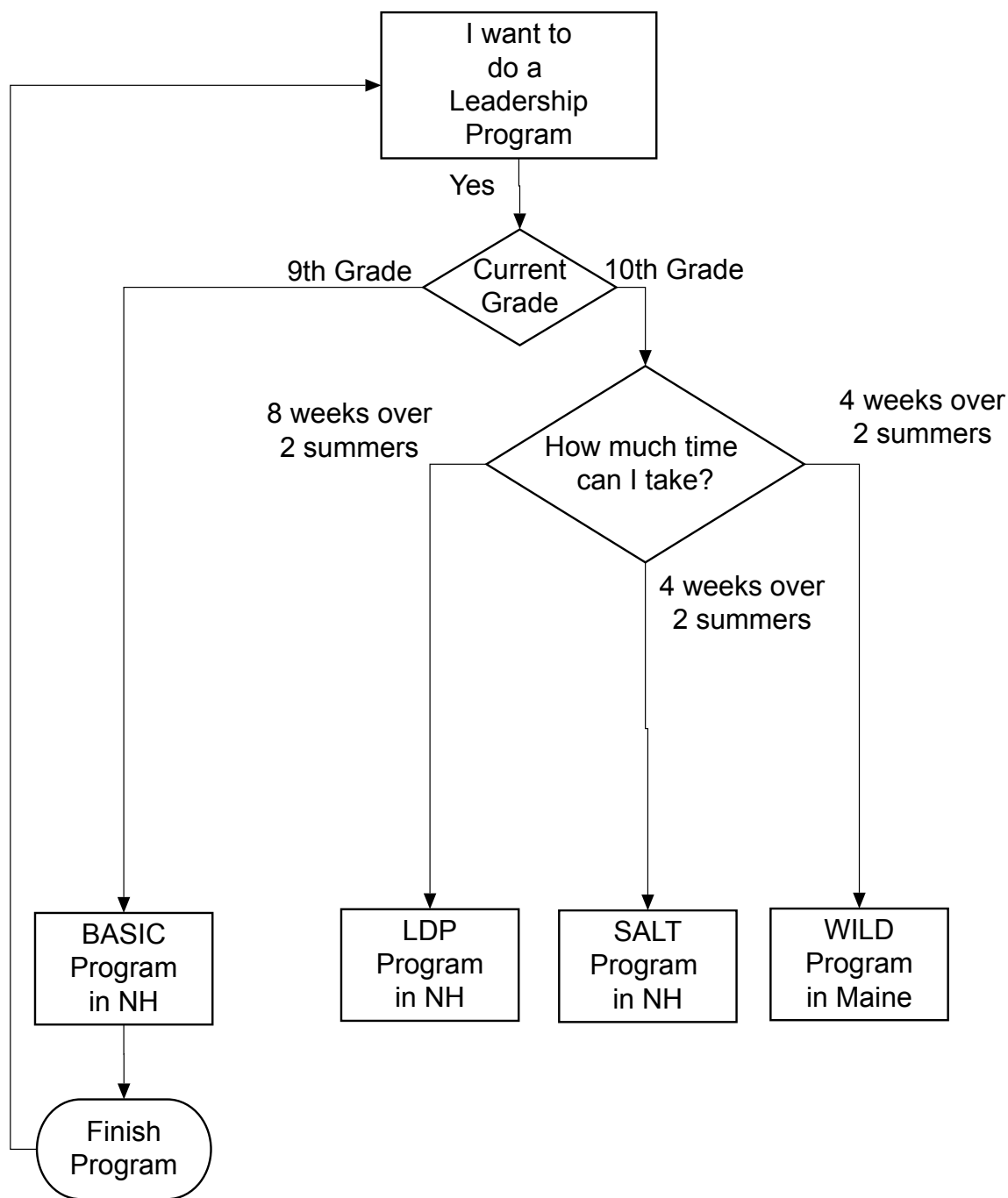
The end goal and purpose of each of our programs are similar. The leadership skills and spiritual development from each program will prepare the participants for college/post high school life and also for possible service on the camp staff. Each program achieves the desired results in a different fashion and a different time frame.

The largest external difference in the programs is the time commitment involved. Obviously the length of the program is some indication as to the breadth of the program. WILD, SALT and LDP involve a two-summer commitment, the WILD and SALT programs last for 4 weeks each summer, while LDP is an 8-week commitment each summer. The cost for each program is reflective of the length of the program as well.

A second difference is the size of the program. SALT will have up to 10 participants, WILD will have 12 participants, and Leadership Development will have 24 participants each year. Some like smaller groups and others enjoy larger ones.

Don't forget, for WILD, SALT and LDP , you are making a two summer commitment, so look ahead to determine if you can maintain that commitment. Also, don't forget that the camp you attended in the past has no impact on which leadership program you choose to attend. For example a Deer Run camper who has enjoyed New Hampshire might really discover the WILD Program a better fit for the next two years. If you are not sure what program to apply, give us a call in the camp office and we can provide more specifics to help you make a decision.

Decision Matrix



Leadership Program Application

☐ WILD Program ☐ LDP Program ☐ SALT

☐ I'd be interested to be considered for all three of these programs!
I've placed a number in each box to indicate my preference.

Please note: To be accepted, an applicant must complete this application in its entirety, including medical information and authorization signatures.

Applicant's Name _____
Last First

Mailing Address _____

City/State/Zip _____

Applicant's E-Mail _____ Cell Phone (____) _____

Permanent Address (if different from above) _____

City/State/Zip _____

Home Phone (____) _____

Mother's Name _____ Mother's cell (____) _____

Mother's E-mail _____ Father's E-mail _____

Father's Name _____ Father's cell (____) _____

Emergency Contact _____ Phone (____) _____

Citizenship: Are you a citizen of the United States? Yes _____ No _____

If you answered "no", what is your country of citizenship? _____

If you answered "no", are you an exchange student? _____

School: Name _____ Phone (____) _____

Address _____

City/State/Zip _____

School Type: Public _____ Private _____ Parochial _____

BIOGRAPHICAL INFORMATION

Birthday ____/____/____ Sex: M ____ F ____

Current Year in School: Freshman _____ Sophomore _____
Junior _____ Senior _____

T-Shirt Size (circle one): Small Medium Large X-Large XX-Large

Describe what you think you will bring and contribute to the leadership group. Also, what do you hope to gain from your experience? What would be your goals?
(Feel free to attach a separate paper with your responses to these questions.)

Please discuss your spiritual journey, recounting when and how you became a Christian.

Who is Jesus Christ? How does your relationship with Him impact your daily life?

How did you hear about camp? (mark all that apply)

Parent/relative _____
Alumni _____
Personal friend _____
Camp brochure _____
Other _____

Please attach recent
school picture.

This section must be completed for your application to be considered:

Grade Point Average : _____ on a _____ point scale
(must be a minimum of C to be accepted - or a 2.0 when computed on a 4.0 scale)

CO-CURRICULAR INVOLVEMENT

School Activity or Organization	9	10	11	12	Leadership Position
---------------------------------	---	----	----	----	---------------------

Church or Community Organization	9	10	11	12	Leadership Position
----------------------------------	---	----	----	----	---------------------

Please indicate the number of hours devoted to these activities on a weekly basis _____

Please list any international travel experiences _____

WORK AND VOLUNTEER EXPERIENCE

Please describe any paid or unpaid volunteer experience, noting the years worked and the number of hours spent per week.

Position	9	10	11	12	Hours per week
----------	---	----	----	----	----------------

REFERENCES

1. Teacher _____

2. Pastor or Youth Minister _____

MEDICAL INFORMATION

Please complete the entire medical section, explaining in detail any pertinent considerations.

Name of Camper _____ Age _____

Height _____ Weight _____ Hair Color _____ Eye Color _____

Do you have any medical considerations of which we should be aware? Yes _____ No _____

Physical Handicaps? No _____ Yes (specify) _____

Vision problems? No _____ Yes (specify) _____

Dietary needs? No _____ Yes (specify) _____

Any other problems? No _____ Yes (specify) _____

Has the applicant seen a Counselor (therapist, psychiatrist) in the past 5 years?

No _____ Yes _____

If "yes", please describe the circumstances on a separate sheet of paper.

Do you have any reactions to medications? No _____
Yes (specify) _____

Have you had any recent illness? No _____
Yes (specify) _____

Are you presently on any medication? No _____
Yes (specify) _____

Have you ever been hospitalized? No _____
Yes (specify reasons and dates) _____

Date of last Tetanus Toxoid (recommended to be within previous 5 years) _____

Has the applicant a history of the following? Mark "X" if the answer is yes.

Allergy	Kidney Disease	Eating Disorders
Frequent Headaches	Hypoglycemia	Allergies
Diabetes	Seizure Disorder	Heart Diseases
Frequent Nausea or Indigestion	Other Neurological Disorders	Rheumatic Fever
Lung Disease	Menstrual Disorder	
Emotional Instability	Other	

Please provide detailed remarks for any of the above questions answered in the affirmative. Be sure to include relevant dates, medications, and any necessary provision for needs. Participants into the leadership programs are required to have a physical examination within 12 months prior to the start of each years program. A detailed medical form will be sent, along with additional program information, to those candidates selected for the program.

Notice of Risk

We are aware that during the leadership programs certain risks and dangers may occur which are out of the control of the instructors. We further realize that the camper will be participating in activities which are by nature dangerous, and in which the risk of harm may be greater than one's normal way of life, and the participant will be in remote places without ready access to medical facilities. In consideration of and for the participant's right to participate in such activities, we have and do hereby accept all of the above risks.



We also acknowledge the fact that the instructors have the right to terminate the camper's participation in the program because of health or physical condition. We agree that the decision of the instructors and the camp director shall be binding upon all of the parties concerned.

We recognize the leadership program necessitates a two summer commitment in terms of participation and financial obligation.

Christian Camps and Conferences, Inc. , subject to the above assumed risks and statement of responsibilities, assumes the responsibility for the care and supervision of the participant from his/her arrival at camp through his/her departure. I/We release and hold harmless Christian Camps and Conferences, Inc. and its employees and Board of Directors from and against any claims whatsoever.

Each of the undersigned has carefully read all the above statements and, with full understanding of the terms, consents to the participation of _____ in accordance with the standards, rules, and regulations of the leadership programs and Christian Camps and Conferences, Inc.

Parent's or Guardian's Signature

Date

Camper's Signature

Date

Please mail completed application to :

Leadership Programs
Christian Camps and Conferences, Inc.
34 Camp Brookwoods Road
Alton, NH 03809

Development Leadership

Program
2019 Summer



OVER 35 YEARS OF EXCELLENCE IN LEADERSHIP DEVELOPMENT

ADVENTURE • CHALLENGE • SPIRITUAL GROWTH

Christian Camp
and Conference

